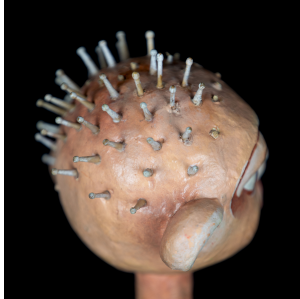
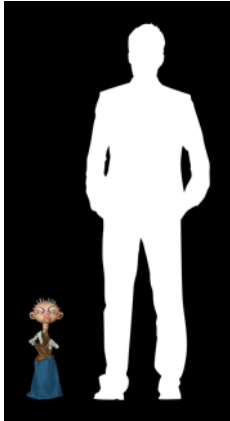




CONDITION REPORT: MTM.2013.0100.0312

REPORT CREATED: 2026-03-14 15:32:21



TECHNICAL DETAILS

NAME: Baby
EVENT: What Hands Are For
REFERENCE: MTM.2013.0100.0312
DATE: 2013
STORAGE REF: -
TPOLOGY: puppet / direct manipulation / glove
HEIGHT: 460 mm (1'6" in)
WIDTH: 160 mm (0'6" in)
LENGTH: 160 mm (0'6" in)
WEIGHT: 240 g (0.53 lb)

MATERIALS

head | polystyrene, paper dough
hair | wood
painting | acrylic paint
costume | various fabrics, leather

ARTISTS

DIRECTION: Clara Ribeiro
ART DIRECTION: enVide neFelibata
BUILT: Clara Ribeiro, enVide neFelibata
COSTUME: Clara Ribeiro

DESCRIPTION

This puppet require the direct intervention of the manipulator's hand to animate the character. The thumb and middle fingers are used to give body to the puppet's hands, and the index finger is placed inside the puppet's head. As far as acting is concerned, in this show the actress acts directly with the character/puppet, playing Baby's mother. The use of a glove puppet in this show is not just a technical choice, but also a symbolic one. By making the manipulator's hand a visible and integral part of the puppet, the concept of care and interaction between the mother puppeteer and the Baby puppet is emphasized. The body of the puppet is assumed to be a leather glove, as the name of the show suggests a thematic exploration of the function and meaning of hands, both in the literal sense of manipulation and in a metaphorical sense related to human actions and interactions. The sculpture of the puppet and the painting refer to a stylized figure of a baby, and this stylization allows for the exaggeration of certain features, which can highlight the character's emotions and make them easier for the audience to read. In this case, the puppet's facial expression is defiant, serving to emphasize the rebellious nature of

the Baby character in the context of the show. Through careful manipulation and an understanding of the principles governing human emotions, puppet manipulation requires the manipulator to have a deep understanding of the subtleties of non-verbal communication. The puppeteer translates the character's emotions and intended actions through a limited range of movements provided by this simple manipulation technique.

CONTEXT

This show reflects on Baby's irascible behavior when denied something, and also serves as a metaphor for the complex dynamic that can arise between children and parents. It also addresses broader issues such as parental responsibility and children's rights.

PROPER CARE - GENERAL CONSIDERATIONS

- Objects must be shielded from direct sunlight at all times to prevent UV damage and fading.
- Maintain a stable environment; avoid exposure to high humidity or rapid moisture fluctuations.
- A strict no-touch policy is in effect for both the public and curatorial staff to prevent oil and acid transfer.
- Authorized handlers must wear appropriate archival gloves whenever contact is necessary.
- Visitors and staff are permitted to take photographs and videos for personal use only.
- The use of flash is strictly prohibited to protect light-sensitive materials.
- No captured imagery may be used to produce saleable goods, such as postcards, books, or merchandise.
- Wheels or casters attached to objects are for on-stage positioning only and are not for general transport.
- Objects must be moved using a secondary dolly or professional equipment rather than their own casters.
- No food, liquids, or smoking are permitted within the immediate vicinity of the objects.
- No cleaning agents, polishes, or dusters should be applied to the objects except by authorized conservation staff.
- Objects must be displayed on stable, level surfaces and secured against accidental tipping or vibration.
- Display areas must be monitored by staff or camera surveillance at all times during public hours.
- Any accidental contact, change in condition, or environmental spike must be reported to the lender within 24 hours.
- Maintain controlled temperatures between 18-22°C to prevent thermal damage to materials.
- Ensure adequate ventilation without direct air currents that could cause dust or environmental fluctuations.
- Conduct regular conservation inspections and document any changes in the condition of objects.
- In case of emergency, follow established evacuation and object protection protocols.